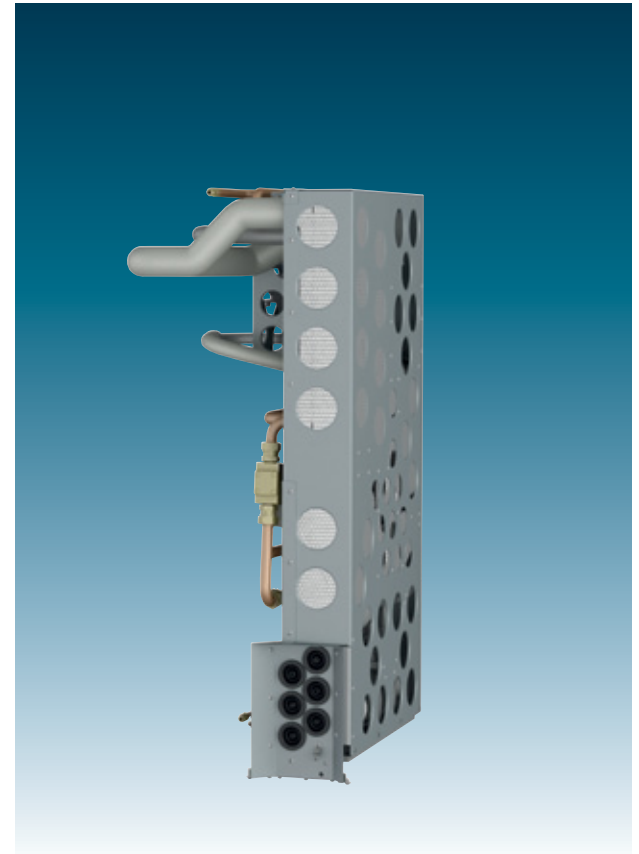
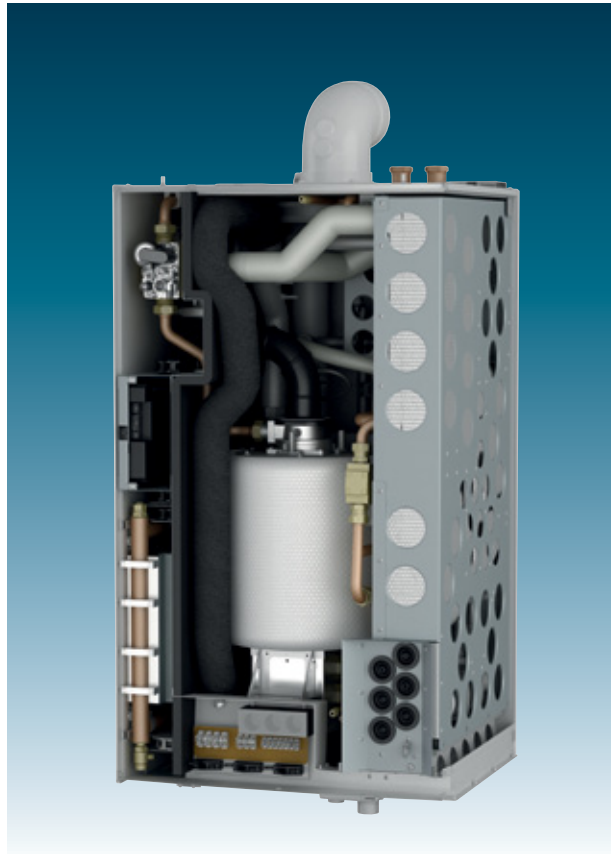
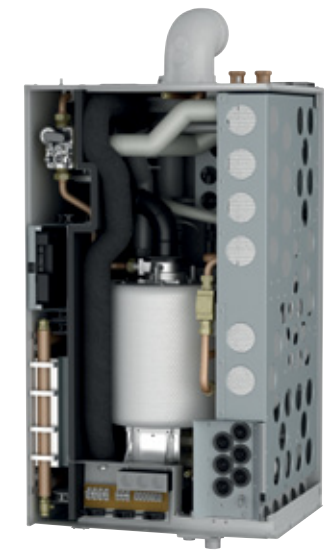


Kingston[®] a revolution in home energy



Kingston[®] a revolution in home energy

standard specifications



GENERAL DETAILS

Engine	Organic Rankine Cycle (ORC) using steam raising primary HX
Main Burner	Dedicated pre-mix
Generator	Permanent magnet asynchronous, 1.1kW nominal
Installation Type	Wall hung room sealed appliance
Electrical Supply	230 VAC 50 Hz (Nominal grid voltage)

ELECTRICAL OUTPUT

Nominal Mode	up to 1000 W
--------------	--------------

THERMAL OUTPUT

Minimum	7.2kW condensing, 6.8kW non-condensing
Nominal Mode	Fully modulating
Maximum	18.0kW condensing, 16.9kW non-condensing

POWER CONSUMPTION

Standby	c.10W including boiler standby
Generating	c.200W maximum, losses dependent on power output

FUEL

Type	Category I2H - 2nd family natural gas
Supply Pressure	17 to 25 mbar (20 mbar nominal)
Supply Conditions	I2H-G20-20 mbar
	Also suitable for LPG (propane)

FUEL CONSUMPTION

Maximum Burner Firing Rate	1.8 m ³ / hour
----------------------------	---------------------------

CENTRAL HEATING SYSTEM

Flow Rate (nominal)	13 l/min.
Type	Sealed pressurised, or open vented
Max System Pressure	PMS = Class 2; 3.0 bar maximum
Secondary Thermal Store Flow Temperature	maximum 82°C

DIMENSIONS

Width x Depth x Height	495 x 425 x 850
Weight (dry)	70kg total weight. Comprises of 40kg boiler and frame, 35kg ORC module. The ORC module is designed for in situ installation or replacement, hence lift weight of 40 and 35kg.

PRODUCT CODE: Kingston Delta



Domestic Heat and Power
the affordable microCHP

Technical Information and Business Development

Energetix Genlec Ltd
Capenhurst Technology Park
Capenhurst
Chester, UK
CH1 6EH

t. +44 (0) 151 348 2100

f. +44 (0) 151 348 2101

info@genlec.com

www.genlec.com